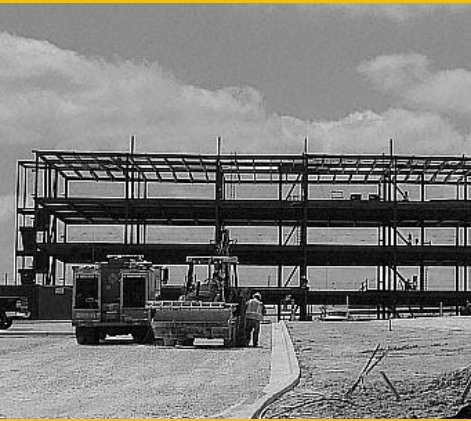


Presented to:
Land Use Model Working Committee

BUILDING AN INTEGRATED FSUTMS/LAND USE MODEL FRAMEWORK TRANSPORTATION ACCESSIBILITY DISCUSSION



Wade L. White
March 26, 2010

Framework Accessibility Considerations



- Accessible to what?
- By what means?
- Causality and order of operation
- Lags
- Data availability
- What measures?

Types of Accessibility



- Mobility
- Mobility Substitutes
- Connectivity
- Land Use
- Accessibility typically a function of:
 - What?
 - Where?
 - How much does it cost?
 - Do/will I want/need it?

Common “To What”



- Households/Population
- Downtown
- Jobs
- Airports
- Colleges/Universities
- Schools
- Good Schools
- Interchanges
- Waterfront/Recreation

Common “By What Means”



- Modes
 - Drive
 - Transit
 - Premium
 - Local
 - Walk
 - Bicycle
- Peak vs. Off-Peak Considerations

Common “Measures”



- System Level-of-service
 - Time
 - Distance
 - Cost
 - Log sum (composite impedance)
- Measures weighted by:
 - Trips
 - Land Use
 - Specific destinations
- What about intrazonal accessibility?

Common “Do/will I want/need it?”



- **Household Segmentation**
 - Size
 - Income
 - Autos Available
 - Detailed Demographics (age, lifestyle, employment status, school age, etc.)
- **Employment Segregation**
 - Type (Retail, non-retail)
 - Size

Common “Why?”



- Trip distribution and mode choice give accessibility measures
- Can introduce order of operation “issues”
- Can accessibility be calculated for all years?
 - Land use models typically operate in 1 or 5 year increments
 - LRTPs typically operate in 10 year increments

A Couple of General Observations



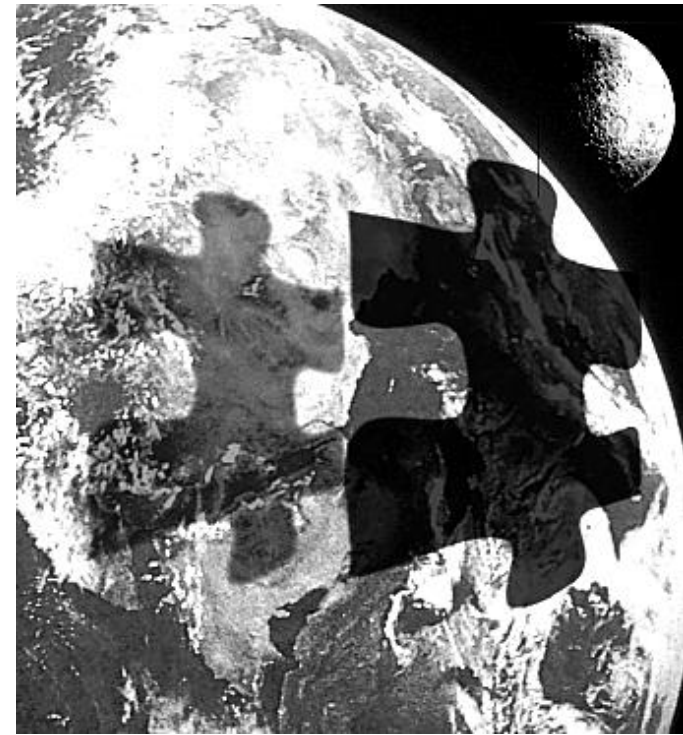
- Accessibility is well-considered in most transport models
- Land use accessibility measures may be VERY different than their transportation counterparts
- Accessibility is almost always
 - A continuous variable
 - A relative measure
- Based on literature/experience, accessibility accounts for about 1/3 of land use decision-making

Now a couple of questions



- What are the factors that made you choose where you live?
 - Accessibility
 - Other
- What are the factors that made your employer choose its location?
 - Accessibility
 - Other
- What are the factors you've observed that make land attractive for development?
- What accessibility-based policies do your local policy-makers hope to use to shape development?

What Are the Factors That Impact Location Choice?



- Accessibility
- Quality
- Amenities
- Policy
- Services
- Price
- Cost
- Return on Investment (Price-Cost)
- Affinity
- Your turn...

Trivia- Where am I?

